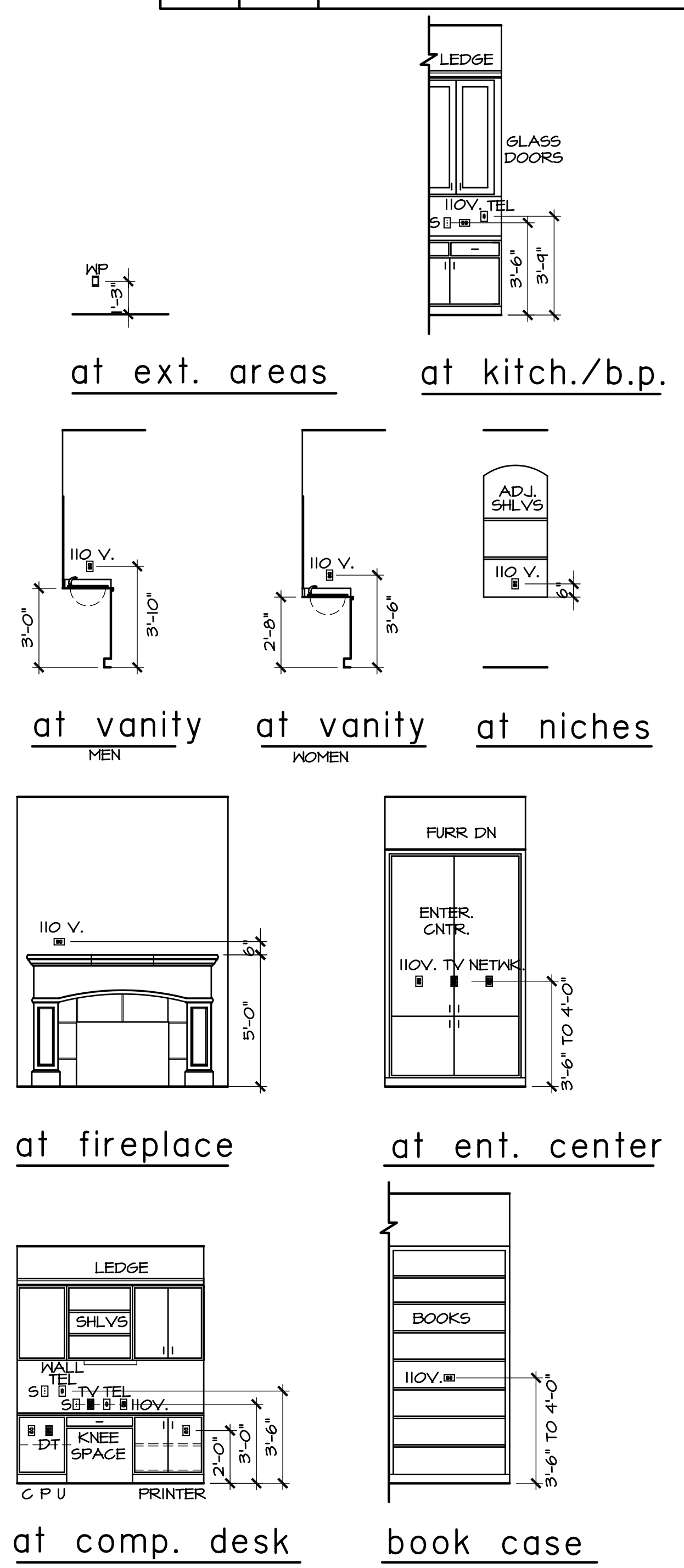
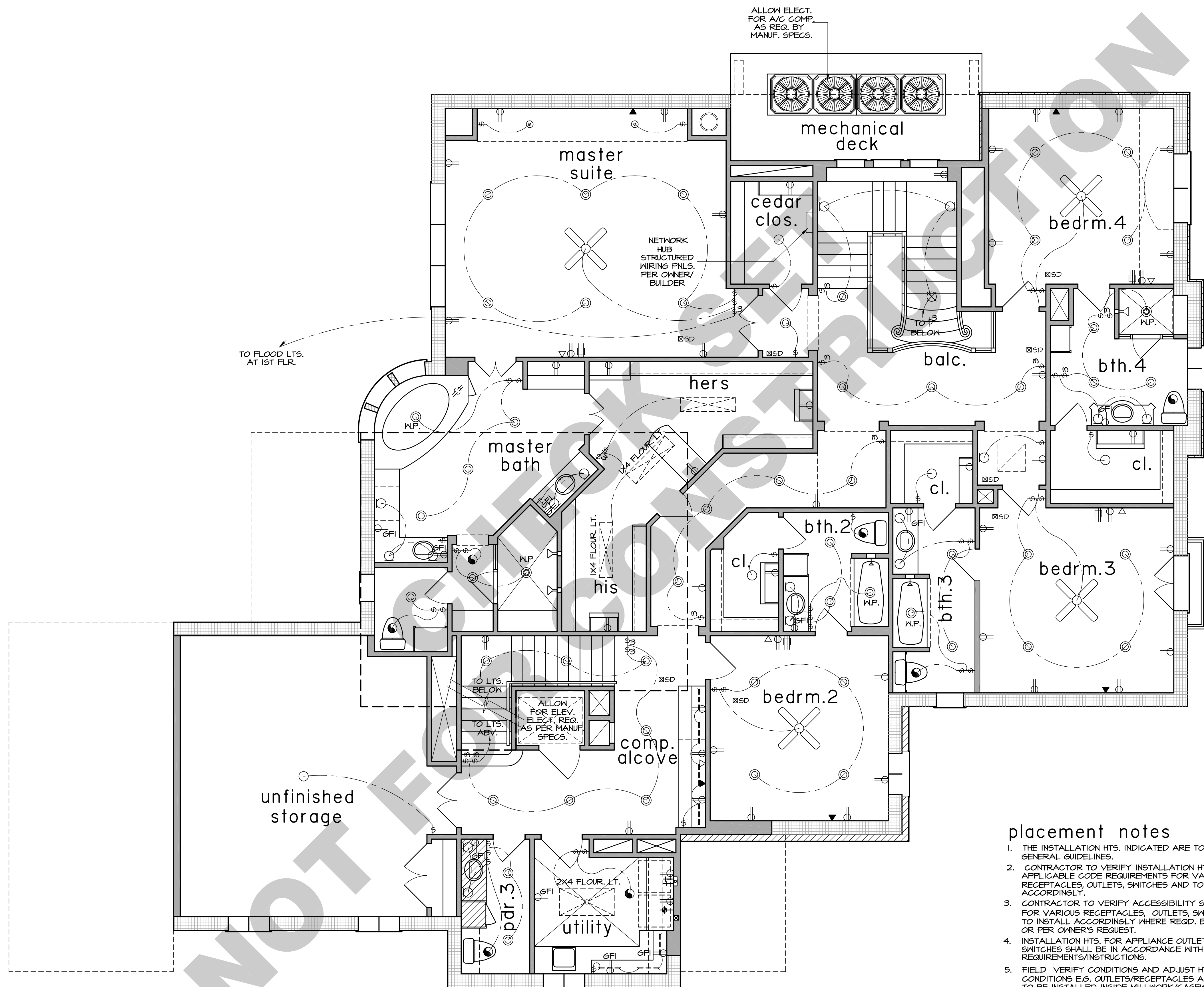
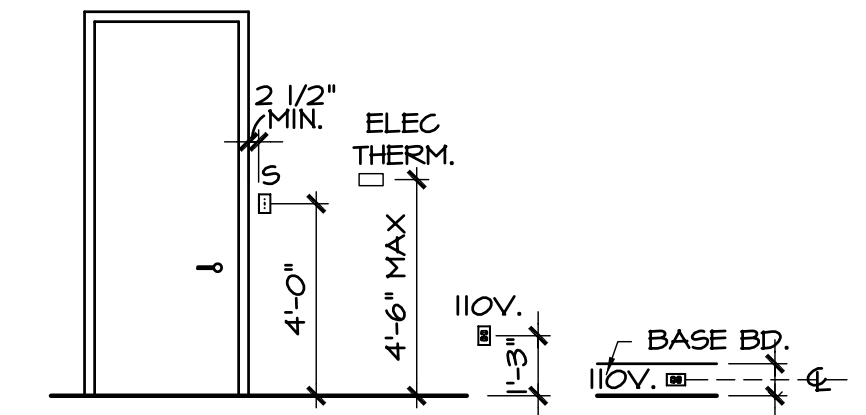


revisions		
DATE	NAME	DESCRIPTION
9-24-08	Angel	INITIAL COMPLETE (REVISED)



placement notes

1. THE INSTALLATION HTS. INDICATED ARE TO BE USED AS GENERAL GUIDELINES.
2. CONTRACTOR TO VERIFY INSTALLATION HTS. PER APPLICABLE CODE REQUIREMENTS FOR VARIOUS RECEPTACLES, OUTLETS, SWITCHES AND TO INSTALL ACCORDINGLY.
3. CONTRACTOR TO VERIFY ACCESSIBILITY STANDARDS FOR VARIOUS RECEPTACLES, OUTLETS, SWITCHES AND TO INSTALL ACCORDINGLY WHERE REQD. BY CODE/LAW OR PER OWNER'S REQUEST.
4. INSTALLATION HTS. FOR APPLIANCE OUTLETS, RECEPTACLES, SWITCHES SHALL BE IN ACCORDANCE WITH MANUFACTURER'S REQUIREMENTS/INSTRUCTIONS.
5. FIELD VERIFY CONDITIONS AND ADJUST HTS. TO MEET FIELD CONDITIONS E.G. OUTLETS/RECEPTACLES AND SWITCHES TO BE INSTALLED INSIDE MILLWORK/CASEWORK.



typ. for all rooms

elect. placement details

N.T.S.

second floor electrical plan

SCALE: 1/4" = 1'-0"